

# Adventures in Apartments

**Ashlee Norris**

**Apartment Coordinator (AC)**

**Western Washington University**

**[Ashlee.Norris@wwu.edu](mailto:Ashlee.Norris@wwu.edu)**

# Learning Objectives

- Learn new concepts about supervising on-campus apartments and how to adapt them to your housing system.
- Exploration on supervising apartment staff.
- Engage in how to develop a residence educational model in an apartment setting.
- Creating a platform to share successes and areas we can improve as apartment housing professional.



# Facilities

7 buildings and 132 apartments total

- 1 apartment occupies 4 students
- 2 students to a bedroom
- Kitchen, living room, 1 bathroom and balcony

1 Community Building

- Desk, computer lab, AC office, lounge, laundry room

Composting and Recycle system



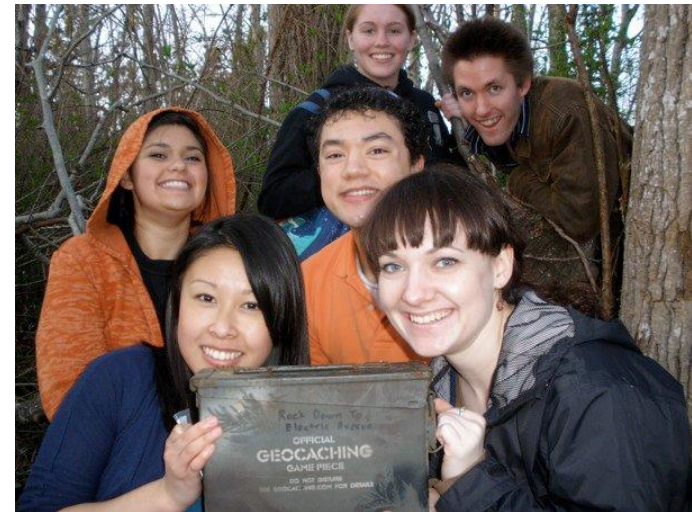
# Apartment Students



- 528 students living in Birnam Wood
- Population
  - Transfer students
  - International students (Study Aboard & Language programs)
  - Family housing
  - Upperclassmen
- Assignments
- Student Leadership
- Summer Housing

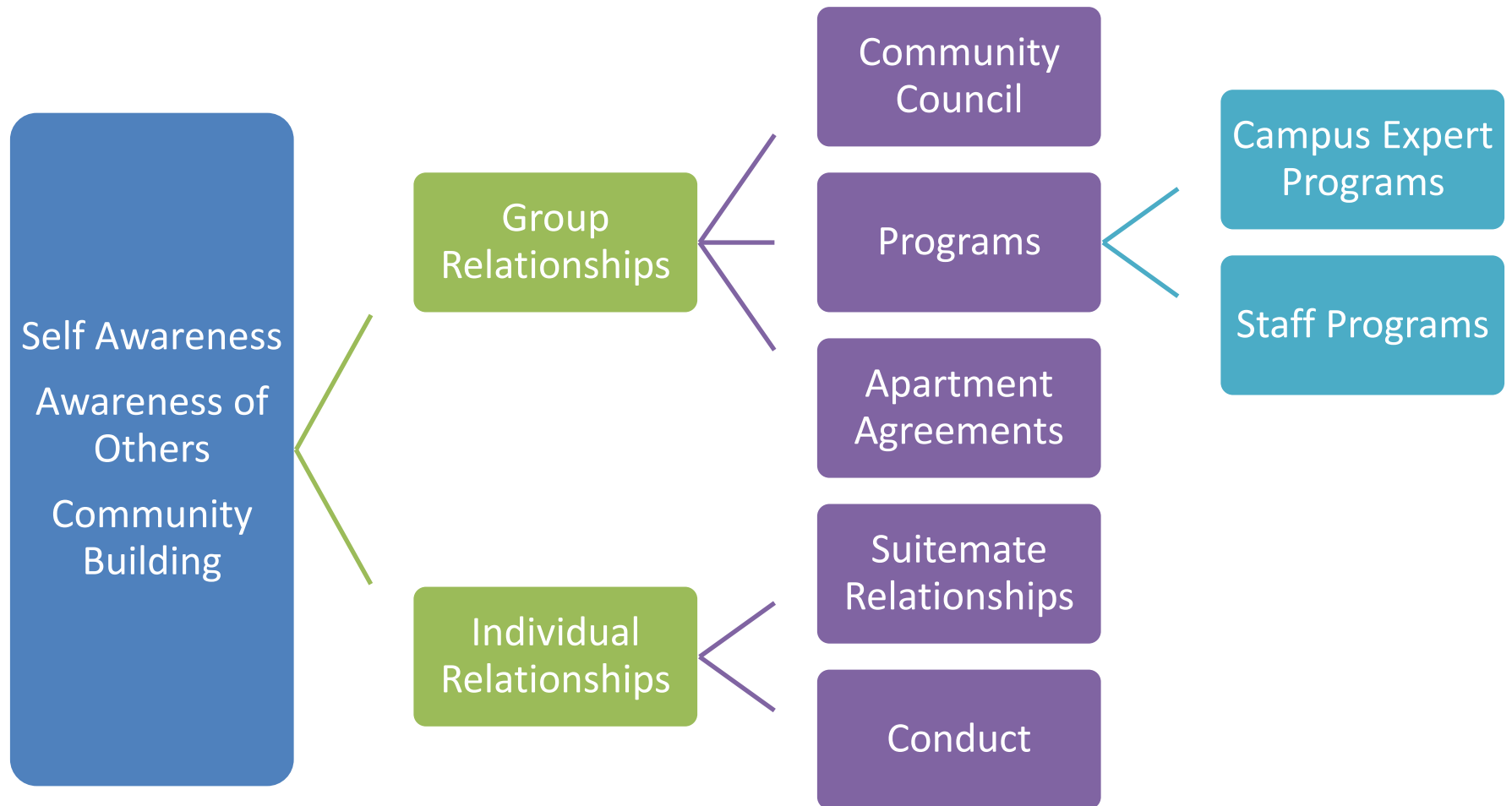
# Apartment Staff

- 1 Manager of Apartments and Conferences
- 1 Apartment Coordinator (AC)
- 5 Community Advisors (CA)
- 1 Administrative Assistant



- Role and Responsibility
- Selection
- Housing
- Training & Development
- Evaluation

# Residential Educational Model



# Sample Lesson Plan

## Staff Programming

**Description:** CA's put on a social program for the residents of the apartment community. Staff will plan 1 program during the month of November as staff.

### Student Learning Outcomes:

- Meet other students.
- Identify and interact with staff.
- Co-create a positive experience with other students.

### CA Learning Outcomes:

- Demonstrate an ability to plan and recruit people to attend an event.
- Create a shared experience with the residents.
- Work as a staff team to plan effective and positive programs for the community at large.

# Sample Lesson Plan

## Roles for Planning

- Leader (1 person):
- Financier & Publicity (2 people)
- Site Coordinators (2 person):

**Time:** 2-3 hours

## **Steps:**

1. CA's talk about program idea at staff meeting and gets approval from AC for event.
2. CA's obtains necessary supplies for the event.
3. CA's discusses with AC how they will recruit people for event and the budget
4. CA's works with students to promote the event in BW.
5. CA's gather folks to go on the day of the event.
6. Each CA completes a program evaluation within 48 hours of the event.

Turn to a neighbor and reflect on...

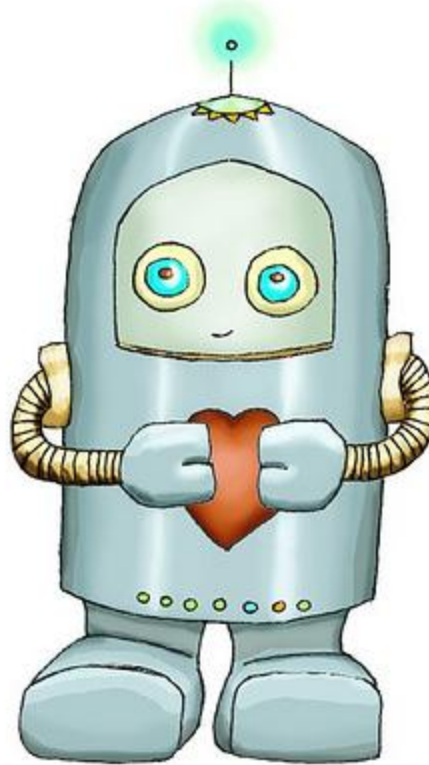
## Reflection

- What models do you use at your school?
- How do each of your models compare to each other and/or what was presented today?
- What would you like to improve in your apartment housing system?

Share with the group your reflection.



Thank you!



*Prayer*

Apartment Coordinator (AC)  
Western Washington University  
[Ashlee.Norris@wwu.edu](mailto:Ashlee.Norris@wwu.edu)